



## 2026 South Coast Netball Saturday Netball

<b>Round</b>	<b>Date</b>
Round 1	7 Mar
Round 2	14 Mar
Round 3	21 Mar
Round 4	28 Mar
School Holidays (no games)	4 Apr
School Holidays (no games)	11 Apr
Round 5	18 Apr
Public Holiday (no games)	25 Apr
Public Holiday (no games)	2 May
Round 6	9 May
Round 7	16 May
Round 8	23 May
Round 9	30 May
Round 10	6 Jun
Round 11	13 Jun
Round 12	20 Jun
Wet weather back up	27 Jun
School Holidays (no games)	4 Jul
Wet weather back up	11 Jul
Round 13	18 Jul
Round 14	25 Jul
Round 15	1 Aug
Semi Finals (all play incl NSG)	8 Aug
GRAND FINALS (all play incl NSG)	15 Aug

\*Wash out contingency – GF moved to Aug 22.



## Competition Rules

Registrations NOW OPEN - <https://bit.ly/4oyAwbq>

Register as an individual and we will place you in a team OR team registrations welcome

### 2026 South Coast Club fees

NETSET	GO	SAT JUNIORS
U8	U10	U11-U14
\$ 320.00	\$ 350.00	\$ 375.00

\*This fee includes annual NQ affiliation cost

### Players per team

- Recommend 8-9 players per team
- Boys – Max 3 per team team (*South Coast Netball Association By-Law- Section 9.7a*)
- Boys – 2 on court at any one time. Must be in different thirds (e.g. GD/GA and GS/GK OR GS/GK and C ) (*South Coast Netball Association By-Law- Section 9.7b and c*)

### Age Divisions

- SET – U8 (Grass courts) (size 4 ball)
- GO – U10 (hard courts) (size 4 ball)
- Juniors –
  - o U11
  - o U12
  - o U13
  - o U14

**Age Group Combinations:** If insufficient teams are registered in a specific age group to create a competitive draw, organisers reserve the right to combine age groups or require younger players to compete in an older age group. The decision to combine or move players up will be made at the organizers' discretion and will prioritize fair play and player safety. Individuals and teams affected will be notified as a matter of priority. This may include the requirement to change team make up to ensure a fair competition.

### Time Slots

- 8.30am – SET and GO
- 9.30am - Juniors

\*Time slots may change at competition organisers discretion pending team numbers.

## Game Duration

- 10-minute Quarters
- 2 min quarter time break
- 2 minute half time

## Representative Players

- Each team to have a maximum of 5 rep players per team.
- Representative players include:
  - o A State Age player from any Association
  - o Does not include development players or Training partners.

## Replacement/Fill In Players

- Team lists will be taken from registered players on Netball Connect.
- Bylaw section 8.16- a player may only fill in once without registering for the competition
- A replacement/fill in player must be from a lower grade
- For all regular draw games, replacement players are to report to the office **PRIOR** to the game to sign replacement player form and gain approval to play. Failure to comply may result in loss of points.
- For all Finals round games- if a replacement player/fill in is required- By Law 12.4 – teams can apply in writing to the Management committee for medical exemption.

## Live Scoring

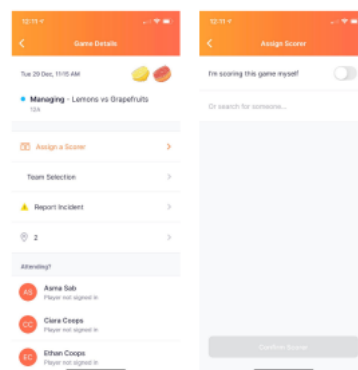
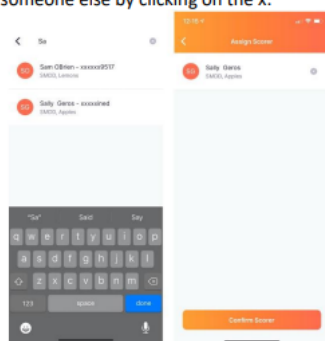
Ensure your manager is allocated via Netball Connect. Live scoring for all games.

How to assign a scorer:

### ASSIGNING A SCORER

As manager you can assign other people to score. They must have downloaded the app, created an account and added the competition to their profile to appear in the scorer list. Refer to page 1 for process.

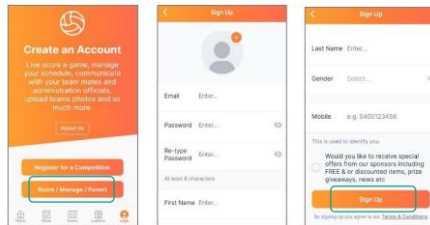
Their name will appear, click on it and then it will show in your watch list. Press Confirm Scorer. You can remove them any time and add someone else by clicking on the x.



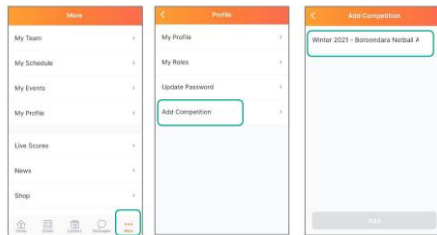
Download the Netball Connect app for IOS or Android via the app stores.

Scorers, managers or coaches are required to Sign Up and create an account with Netball Connect so features relevant to your role can be accessed, such as scoring, communicating with team members, viewing statistics and much more.

The signup process is quick and easy. Download the app, open it and click 'Score/Manage/Parent' at the bottom of the screen, enter your details into the fields and click 'Sign Up'.



Add the competition to your profile. This will ensure your name appears in the dropdown list for Managers to allocate you as scorer for a game.



## Uniforms

- Teams must be in uniform.
- Playing dress and/or playing singlet are available for purchase from South Coast office.
- Uniform fitting dates –
  - o Sat 14 Feb 9-11am
  - o Thurs 19 Feb 4.30 – 6pm

## Umpires

- Umpires are provided and included in your registration fee.
- RESPECT OUR UMPIRES AT ALL TIMES.
- South Coast will remove players or spectators that do not respect our officials.

## Points – Juniors only (U11+)

Win – 3                      Draw – 2                      Bye – 3

Forfeit Loss – 0              Forfeit win – 3

- SET and GO do not play for points

## Wet Weather

- Always assume games are on unless notified otherwise.
- In the event of cancellation, we will immediately post to our social media. Please do not contact us as it slows the process down.
- We aim for 1 hour prior to game start at a minimum.

### **Grand Finals – Juniors only (U11+)**

- Semi Finals – 1 v 4 and 2 v 3
- Winners to play in Grand final
- Set and Go teams will continue to play on during semifinal and Grand final weeks.  
NO ladders or points for these age groups.

### **Finals Extra time (U11+ only)**

- 2-minute break
- 1 x 5-minute play

If scores remain tied:

- NC will pause and the scorer must hit continue
- Play continues until one team leads by 2 goals

### **Forfeits**

Teams must notify the Competition Coordinator as soon as possible via [competitions@southcoastnetball.org.au](mailto:competitions@southcoastnetball.org.au)

Teams must notify before 3:00pm on the preceding Friday. Any notification received after 6:00pm will be considered a late forfeit and a fine may apply.

Late notifications (after 3pm on Friday) please text – 0432 172 667.

Teams must have a minimum of five (5) players available at the scheduled start time, or a forfeit may be awarded.

Repeated forfeits may result in further review and action by the Association.

### **Follow South Coast on social media**

- [Facebook](#)
- [Instagram](#)

### **Clubs**

If you are an external club to South Coast and wish to affiliate/join South Coast's Saturday competition please contact General Manager to be added via Netball Connect.

### **Contact**

[comptitions@southcoastnetball.org.au](mailto:comptitions@southcoastnetball.org.au)

